

Welcome to
Town of Millbury
MILLBURY

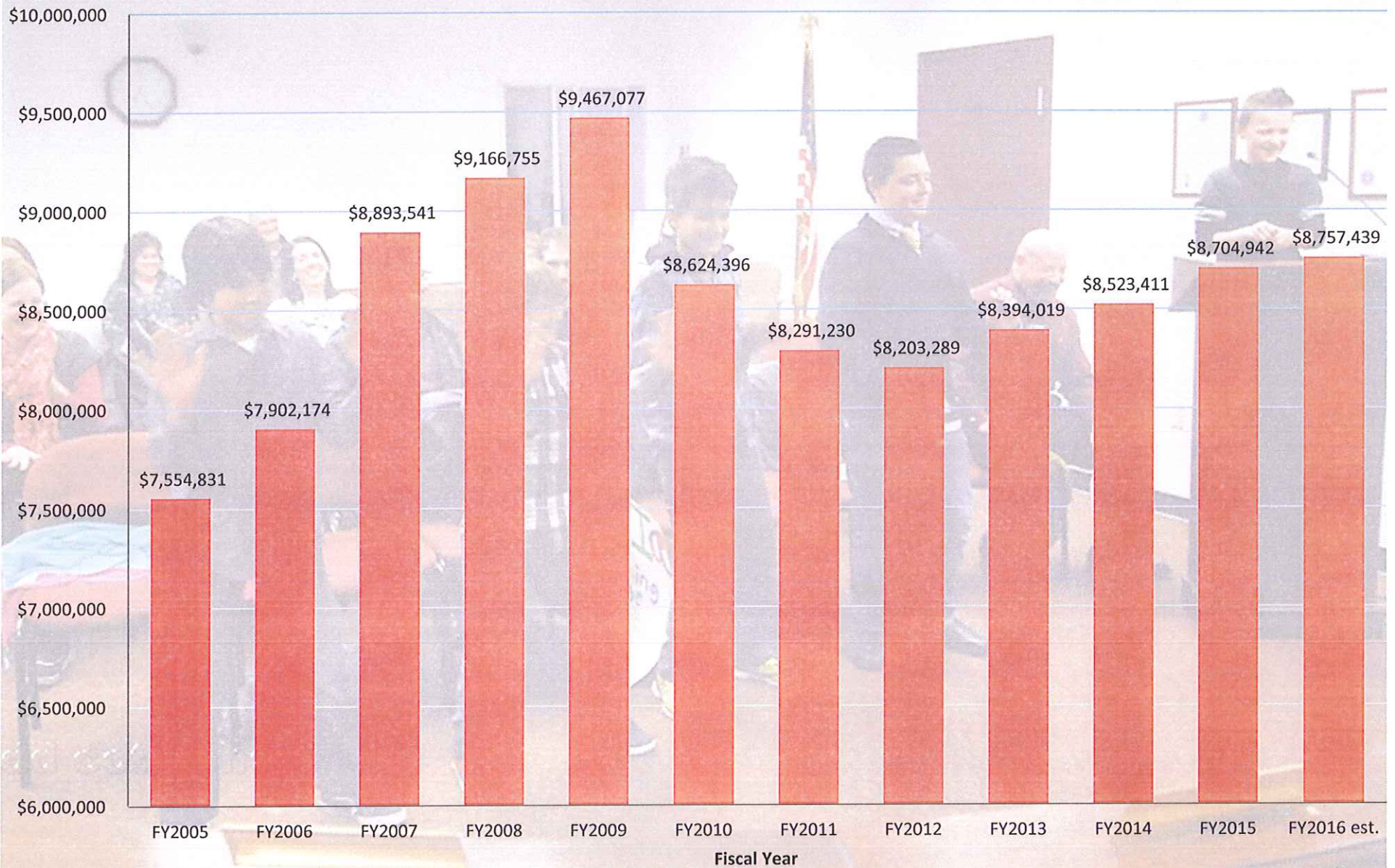
**Fiscal Year 2016 Town
Manager's Budget Message**

INCORPORATED 1813 •

Economy Measures

- **Mitigation of health insurance costs**
 - **Joint effort with employees**
 - **New supplier – Fallon Health plan**
- **Net metering agreements for electric rates**
- **Long term contract for electricity**
 - **7.79 cents per KWH**

Total State Aid FY05-FY16



The background of the slide is a photograph of a school gymnasium. In the foreground, the lower legs and feet of several students are visible as they stand in a line. Behind them is a large banner with vertical red, white, and blue stripes, featuring the text 'Woolly Pride' in a large, stylized font. On the far wall, several championship banners are hanging. From left to right, they include: 'CROSS COUNTRY LONGMONT DISTRICT 5 STATE CHAMPION', 'DISTRICT 5 GIRLS CROSS COUNTRY CHAMPIONS', a scoreboard, 'DISTRICT 5 GIRLS BASKETBALL CHAMPIONS', 'DISTRICT 5 GIRLS SOCCER CHAMPIONS', and 'DISTRICT 5 BOYS TRACK & FIELD CHAMPIONS'.

General Observations

- Town financial position – improving
- Some improvement in economy – still slow growth
- Governor's State Aid proposal is not reflected in this budget. State Aid revenue is level funded
- Most increases due to personnel costs and worker's comp insurance, retirement and vocational education

Overall Estimates

- Total budget of \$ 39,359,308
- General fund is \$ 37,766,934
 - Budget as proposed is in balance
 - Gen Fund Increase year-over-year of \$781,990 or 2.11%
- Includes contractual cost of living increases for employees
- Currently No Proposition 2 ½ Override has been proposed, however need to keep option open

General Fund

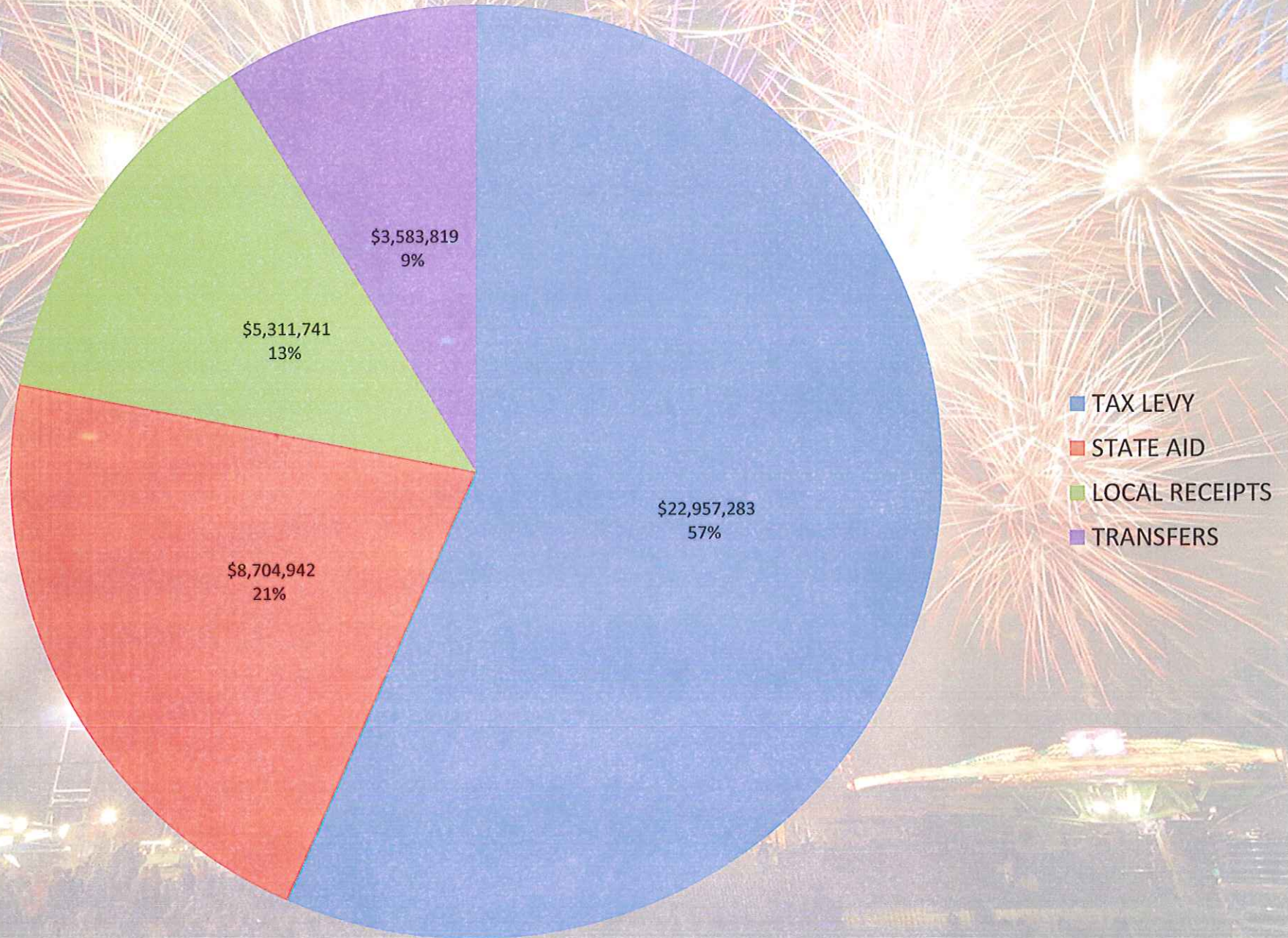


A police officer in a dark uniform is kneeling on a paved surface next to a white Millbury Police car. The officer's uniform has a patch that reads "K9 DALY". The car has "MILLBURY POLICE" written on its side in large, stylized letters. Above the officer, the word "UNIT" is visible on the car's body. The background shows a blurred street scene with trees.

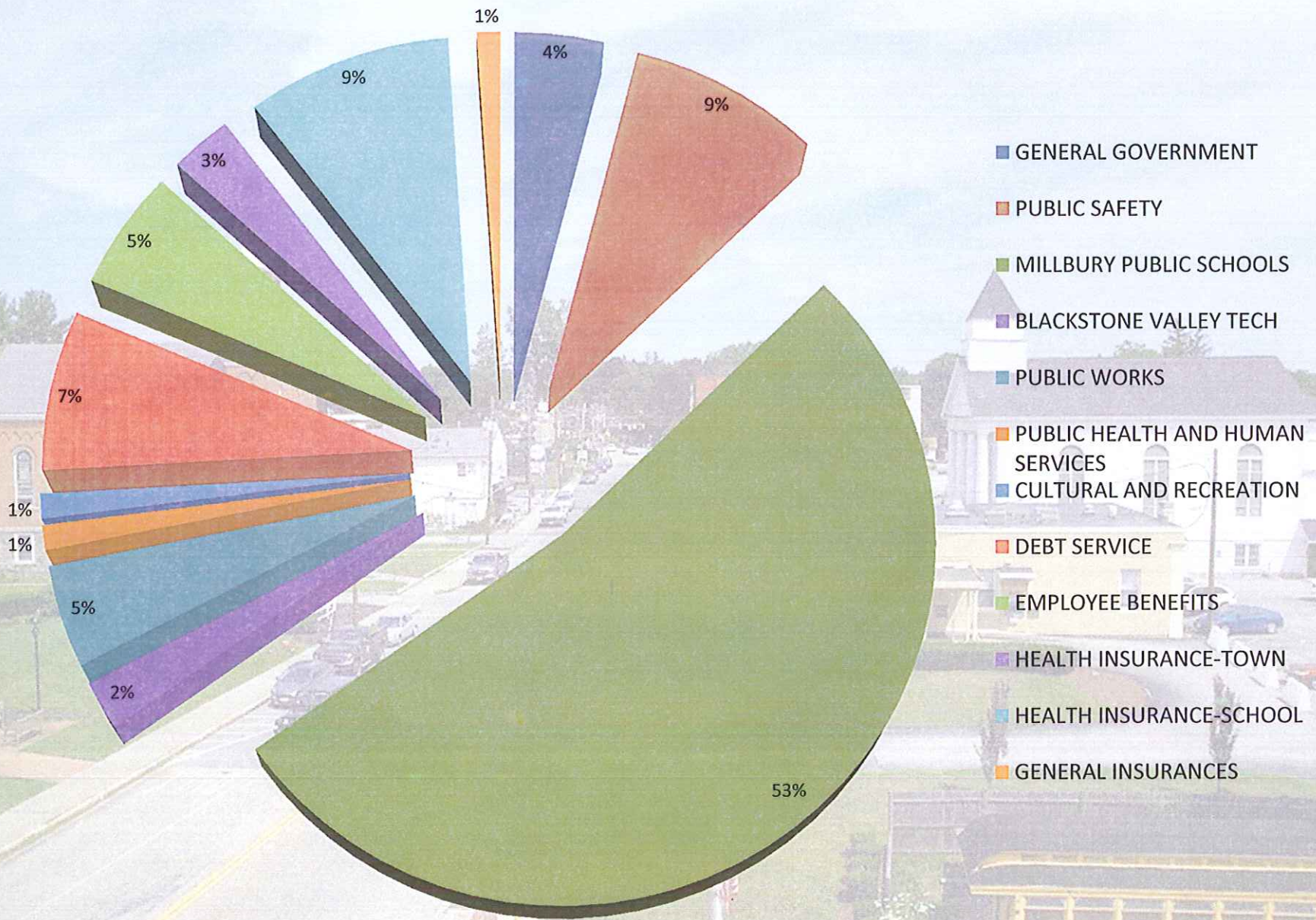
Financial Assumptions

- **Budget is balanced**
 - Based on a estimated revenues
 - Weather cooperates-little or no snow the rest of year
- **State aid figures are level funded**
 - Governor's number show slight increase
 - Gov.'s numbers not included
- **Local receipts continue to hit projections**
 - However most of the increase is due to excise tax and in Wheelabrator revenues

REVENUE

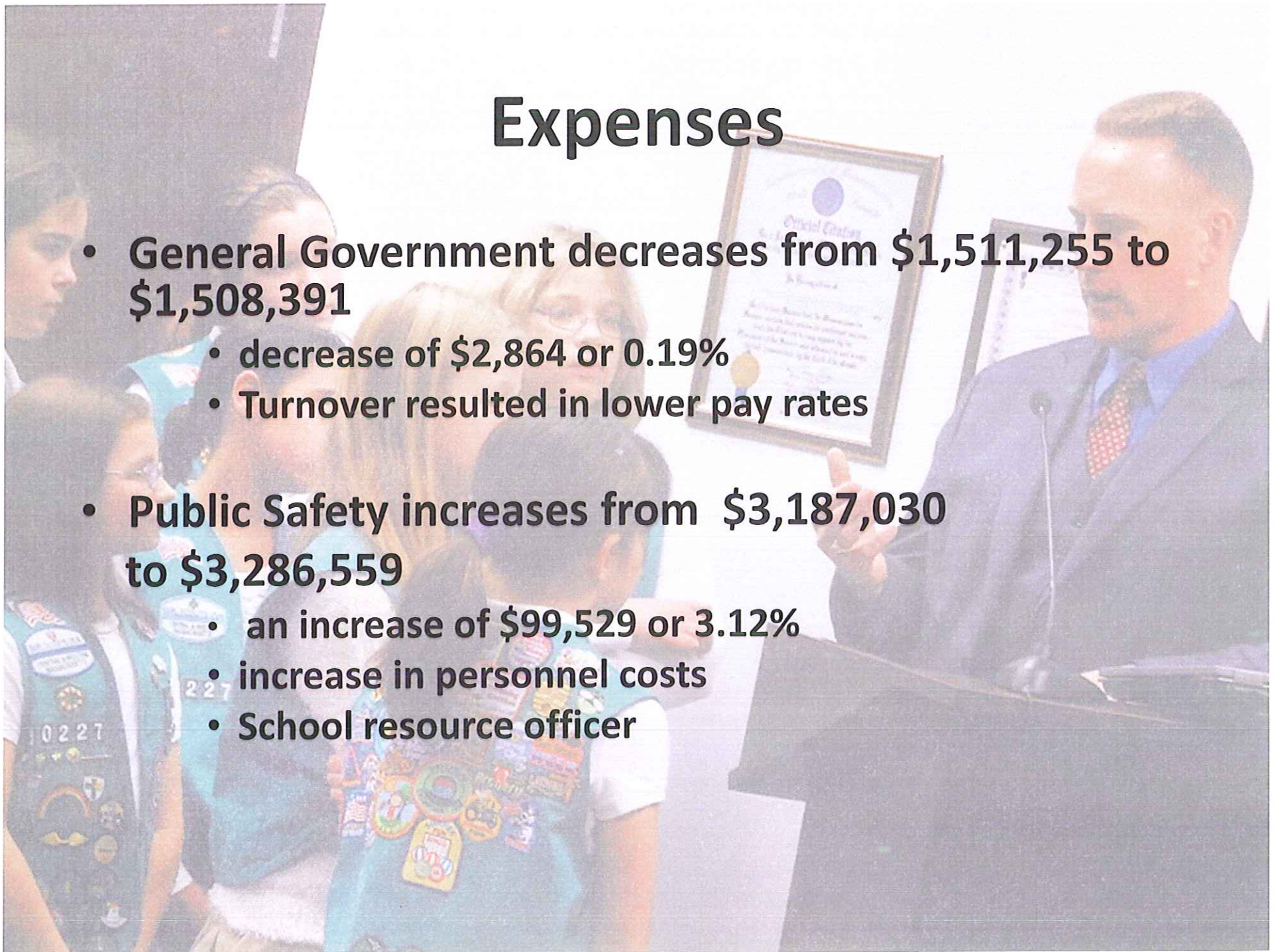


General Fund



Expenses

- **General Government decreases from \$1,511,255 to \$1,508,391**
 - decrease of \$2,864 or 0.19%
 - Turnover resulted in lower pay rates
- **Public Safety increases from \$3,187,030 to \$3,286,559**
 - an increase of \$99,529 or 3.12%
 - increase in personnel costs
 - School resource officer



Expenses (con't)

- **Public Education Increases from \$19,977,862 to \$20,648,750**
 - \$670,888, or 3.36% increase for all schools
 - \$676,891, or 3.54% increase for Millbury Public Schools
 - \$6003, or -0.71% decrease in vocational education
 - One less Norfolk Voke student
- **Public Works increased from \$1,725,434 to \$1,734,262**
 - an increase of \$8,828 or 0.51%

Expenses (con't)

- **Public Health & Human Services increased from \$416,460 to \$423,527**
 - increase of \$7,067 or 1.70%
 - due to adding P/T junior clerk in the COA
- **Culture and Recreation increases from \$417,290 to \$421,474**
 - increase of \$4,184 or 1.0%



Expenses (con't)

- **Debt Service decreased from \$2,746,090 to \$2,731,825**
 - decrease of 14,265 or -0.52%
 - New borrowing offset by items coming off debt roles
- **Employee Benefits decreased from \$6,618,523 to \$6,615,596**
 - decrease of \$2,927 or -0.04%
 - decrease due health insurance

The background image shows a street scene. A yellow school bus is parked on the right side of the road. A white pickup truck is parked on the left side. There are people walking on the sidewalk. In the background, there are buildings, including one with an ATM sign. The overall scene is a typical urban or suburban street.

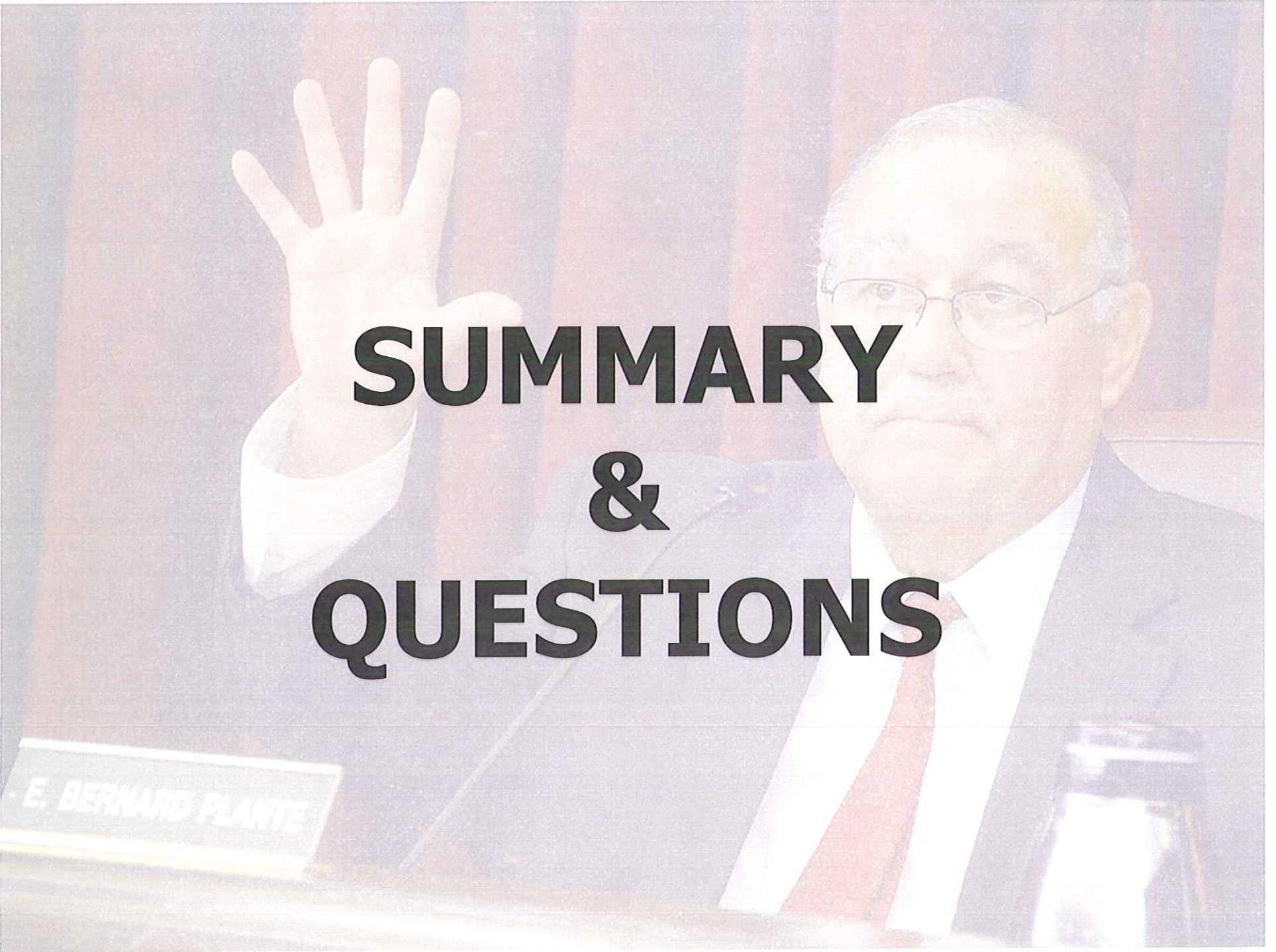
Expenses (con't)

- **General Insurances increases from \$385,000 to \$396,550**
 - increase of \$11,550 or 3.0%
 - Worker's comp. increases
- **Sewer Enterprise increases from \$1,462,779 to \$1,592,374**
 - increase of \$129,595 or 8.86%
 - 6.9% increase in UBWPAD fees



Warrant Articles

- Free cash is up by \$286k
- Amount to be raised includes approx. \$667k in articles
 - 125,000 is for Roads
 - \$93,037 is for Medicare reimbursement for the school department
 - \$20,000 for senior work off
 - \$125,000 for town hall HVAC
 - \$303,479 for DPW fueling station

A photograph of E. Bernard Plante, a man with glasses, wearing a dark suit, white shirt, and red tie. He is seated at a wooden podium, with his right hand raised in a gesture. A nameplate on the podium reads "E. BERNARD PLANTE". The background is a wood-paneled wall. Overlaid on the image is the text "SUMMARY & QUESTIONS" in large, bold, black capital letters.

SUMMARY & QUESTIONS

E. BERNARD PLANTE