

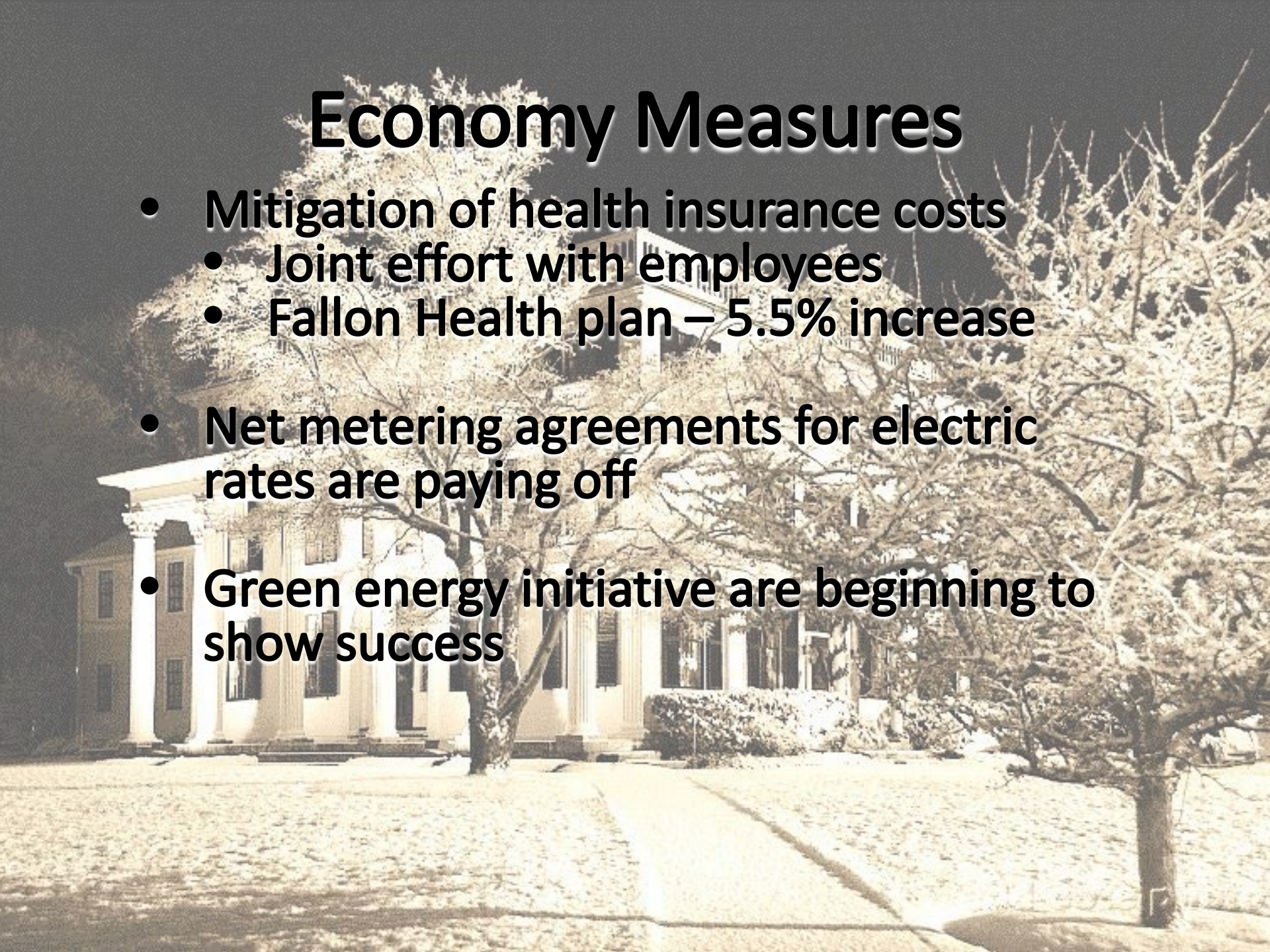


Town of Millbury

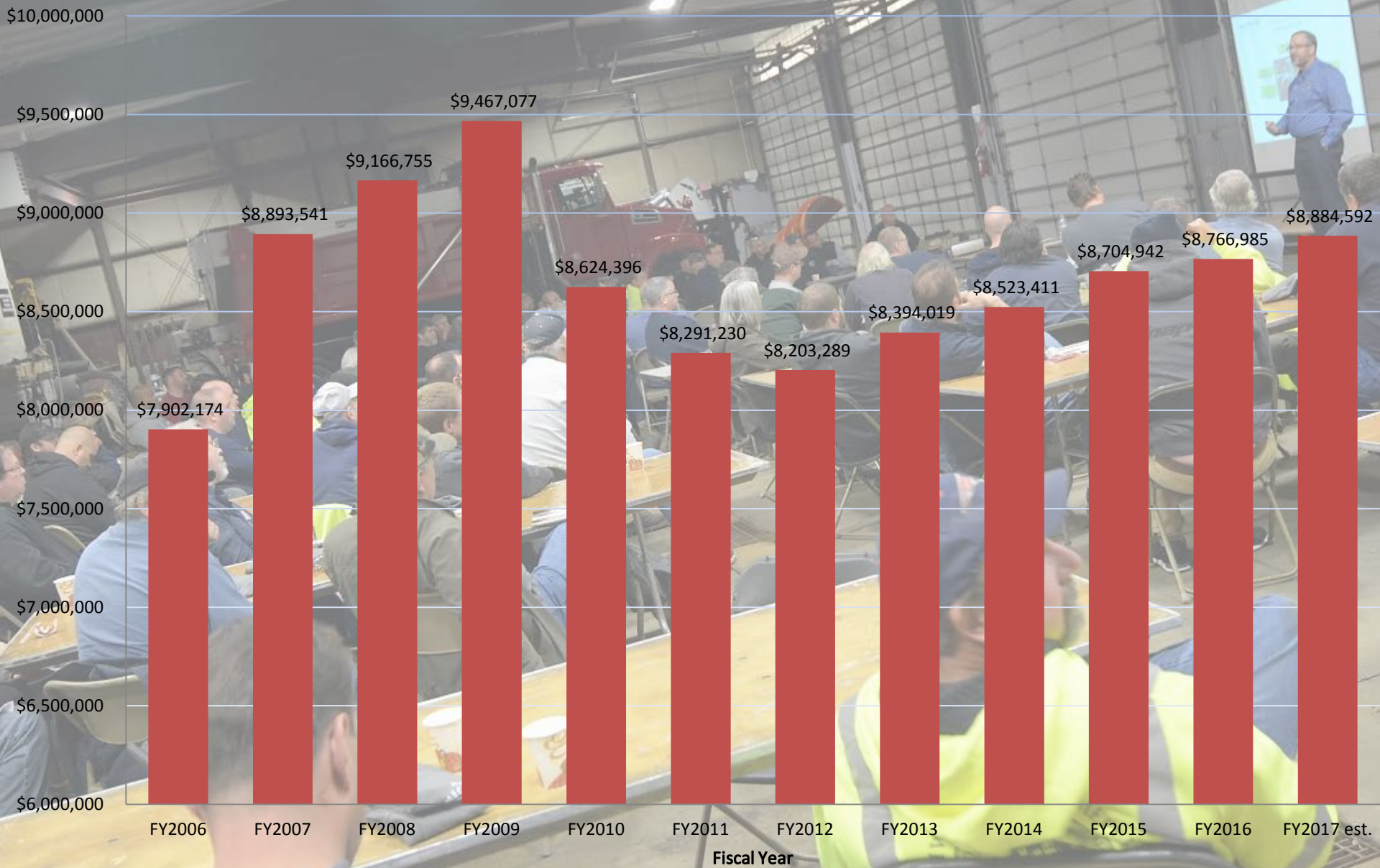
Fiscal Year 2017 Town Manager's Budget Message

Economy Measures

- Mitigation of health insurance costs
 - Joint effort with employees
 - Fallon Health plan – 5.5% increase
- Net metering agreements for electric rates are paying off
- Green energy initiative are beginning to show success

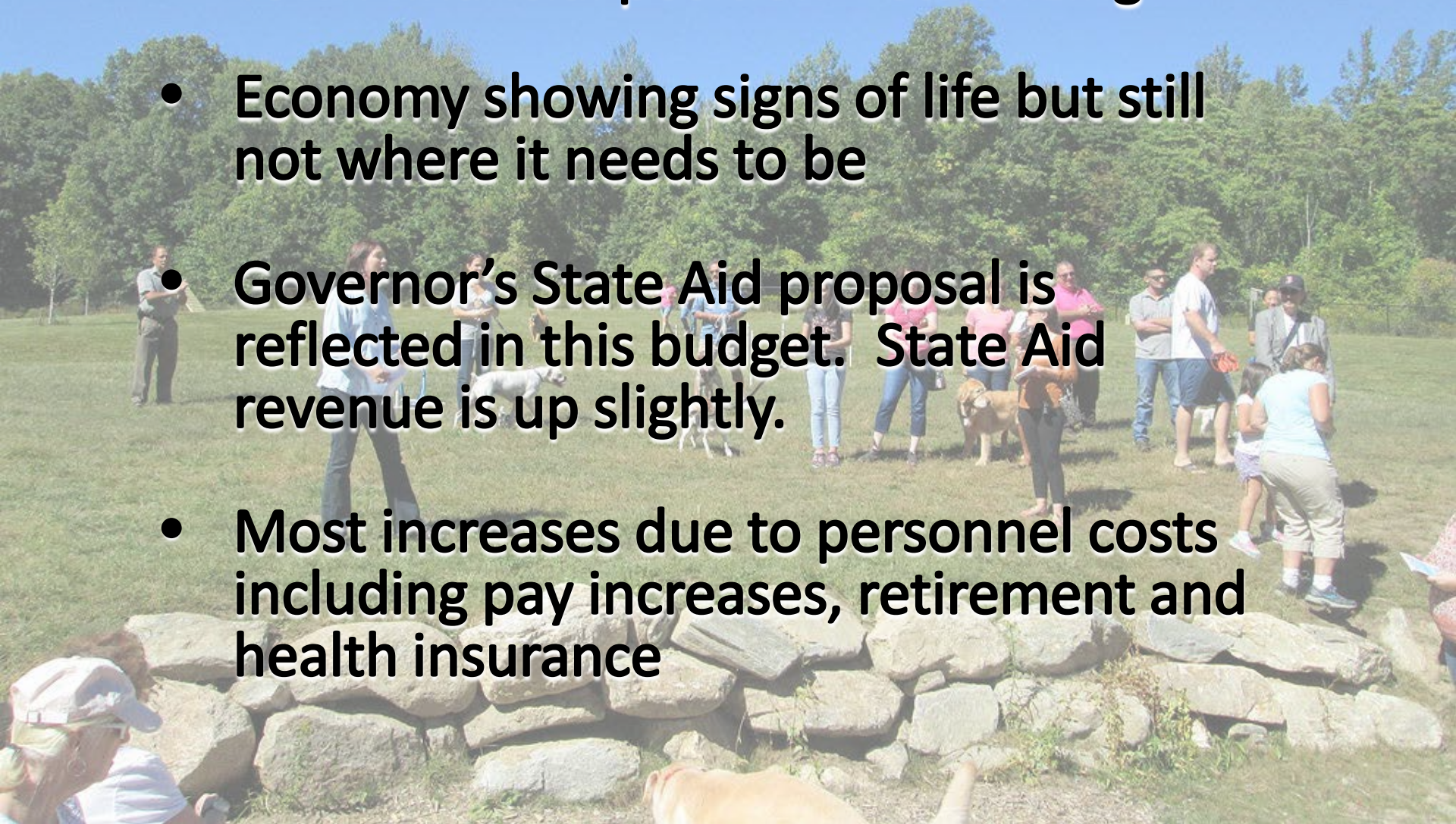


Total State Aid FY06-FY17



General Observations

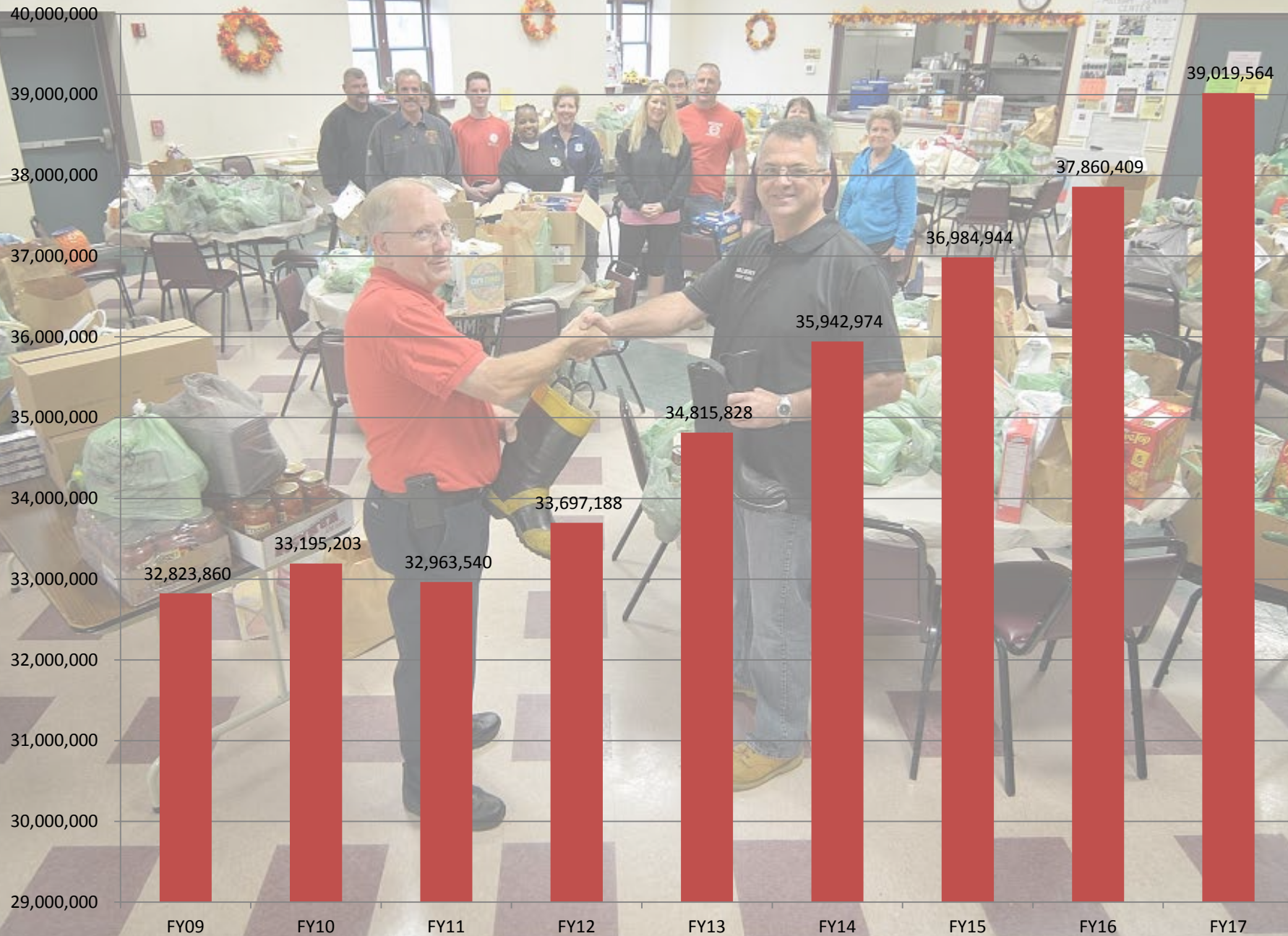
- Town financial position – stabilizing
- Economy showing signs of life but still not where it needs to be
- Governor's State Aid proposal is reflected in this budget. State Aid revenue is up slightly.
- Most increases due to personnel costs including pay increases, retirement and health insurance



Overall Estimates

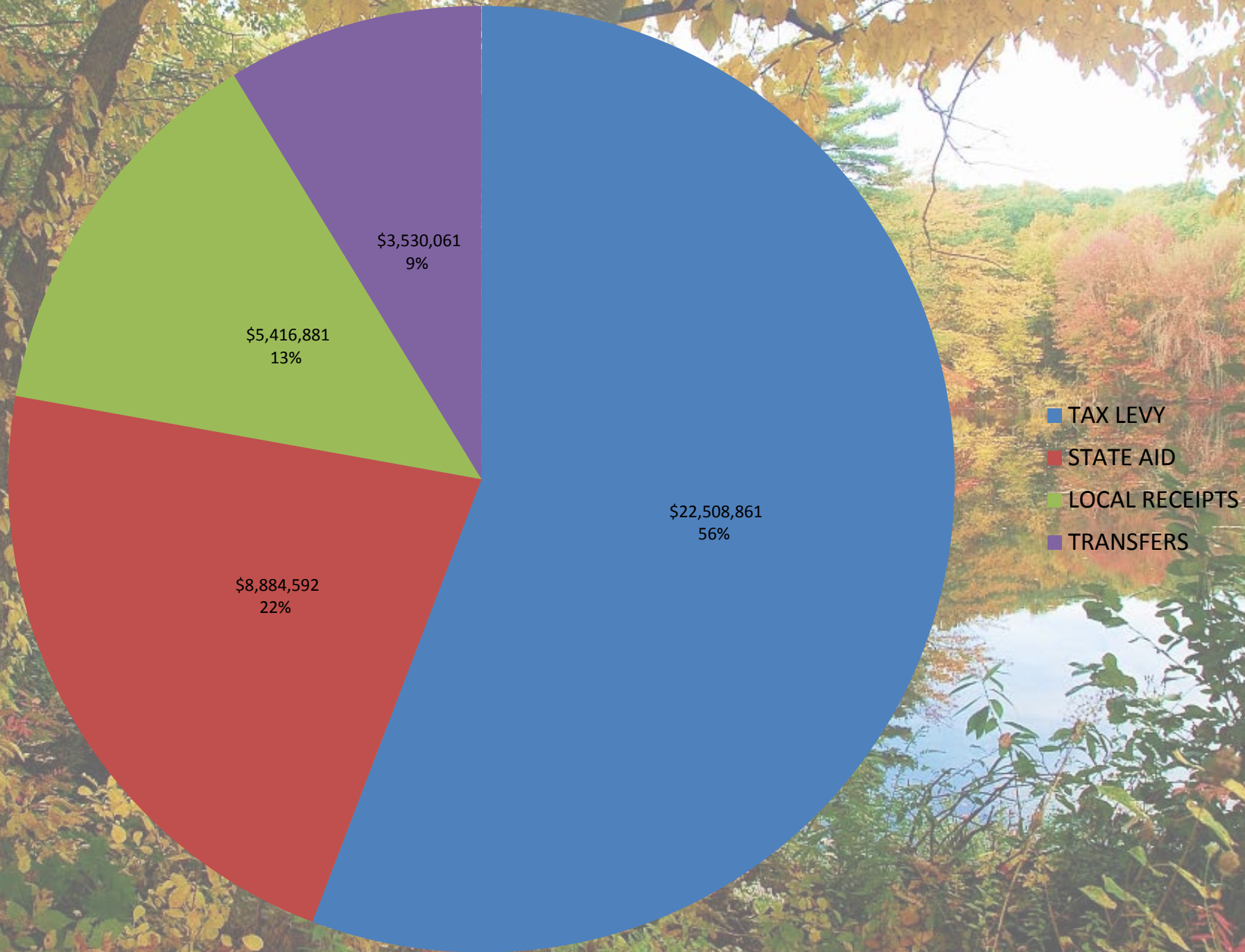
- Total budget of \$ 40,906,608
- General fund is \$ 39,019,564
- Budget as proposed is in balance
- Gen Fund Increase year-over-year of \$1,159,155 or 3.06%
- Includes cost of living increases for employees
- Currently No Proposition 2 ½ Override has been proposed, however keeping options open

General Fund

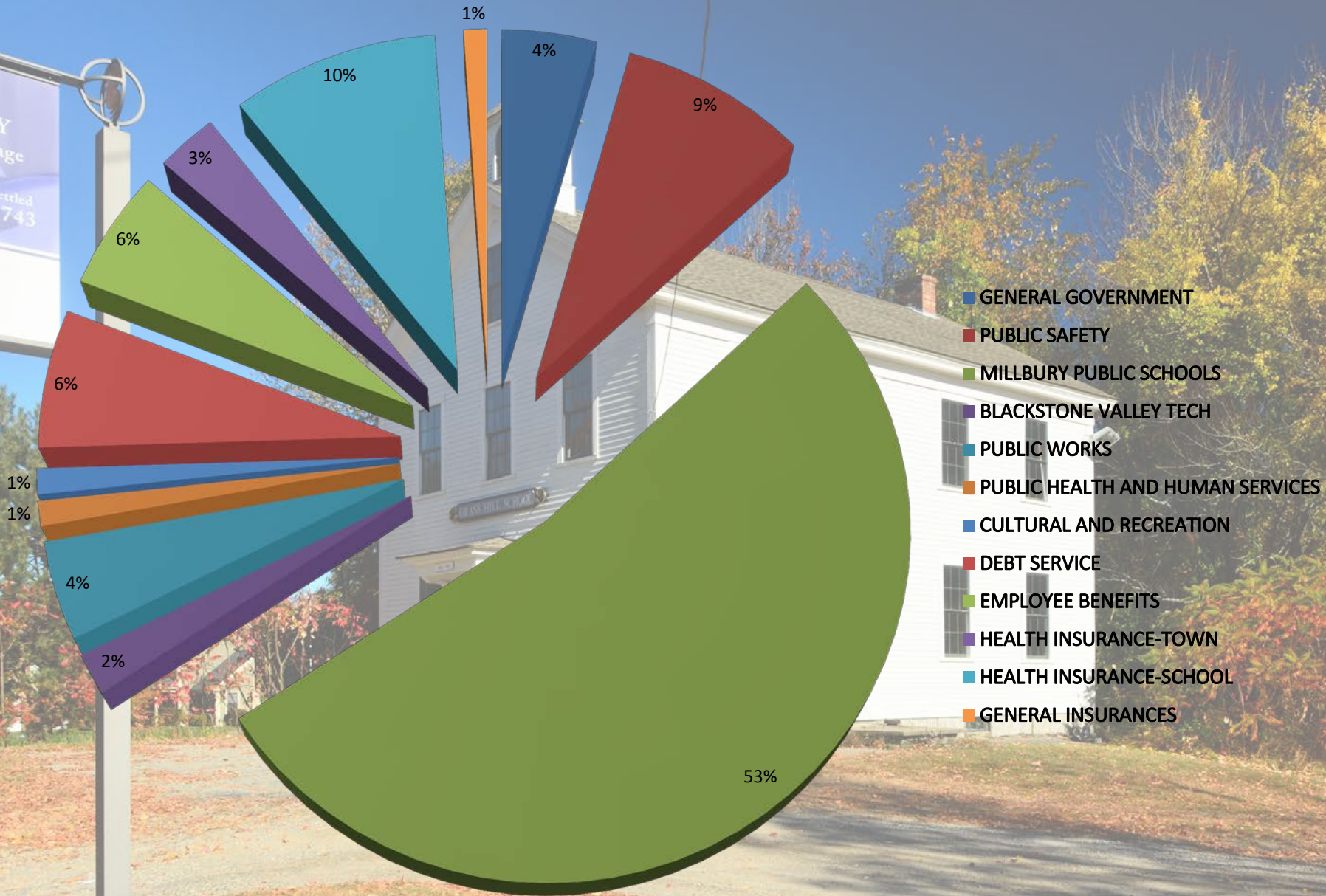


Financial Assumptions

- **Budget is balanced**
 - Based on a estimated revenues
 - Weather cooperates-little or no snow the rest of year
- **State aid figures are level funded**
 - Governor's number show slight increase
 - Gov.'s numbers not included
- **Local receipts continue to hit projections**
 - However most of the increase is due to higher meals tax, excise tax and increase in Wheelabrator revenues



General Fund



Expenses

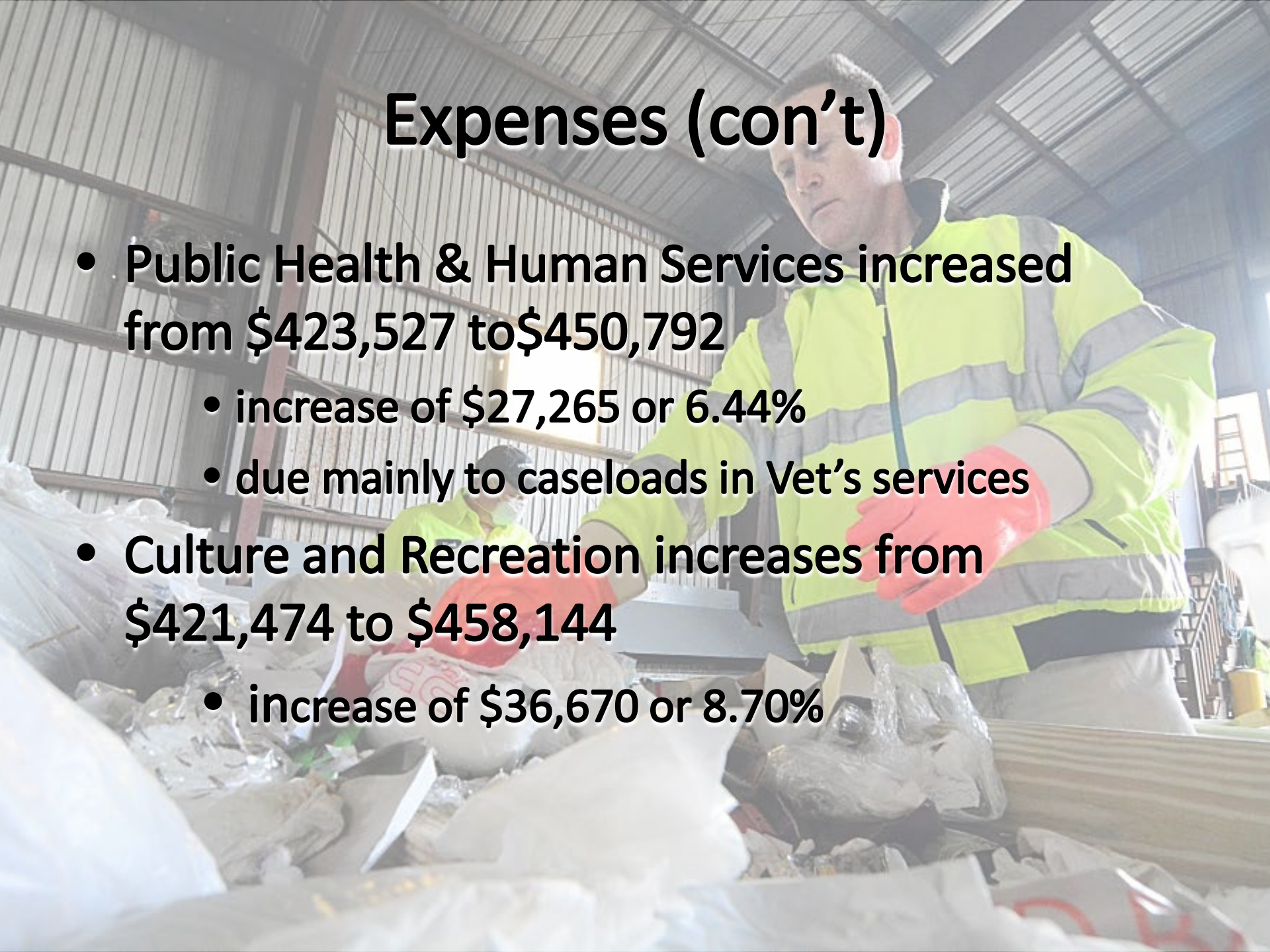
- **General Government increases from \$1,518,391 to \$1,695,465**
 - decrease of \$177,074 or 11.66%
 - Personnel changes-Energy mgr/HR director/general clerk
 - Town Counsel +\$20k
 - Planning board stipend
- **Public Safety increases from \$3,286,559 to \$3,389,517**
 - an increase of \$102,958 or 3.13%
 - wage adjustments
 - School resource officer

Expenses (con't)

- **Public Education Increases from \$19,885,050 to \$20,549,750**
 - \$580,109, or 2.80% increase for all schools
 - \$664,664, or 3.34% increase for Millbury Public Schools
 - \$84,555, or -10.17% decrease in vocational education
 - Eight less BVT students
- **Public Works increased from \$1,734,262 to \$1,778,963**
 - an increase of \$44,701 or 2.58%

Expenses (con't)

- **Public Health & Human Services increased from \$423,527 to \$450,792**
 - increase of \$27,265 or 6.44%
 - due mainly to caseloads in Vet's services
- **Culture and Recreation increases from \$421,474 to \$458,144**
 - increase of \$36,670 or 8.70%

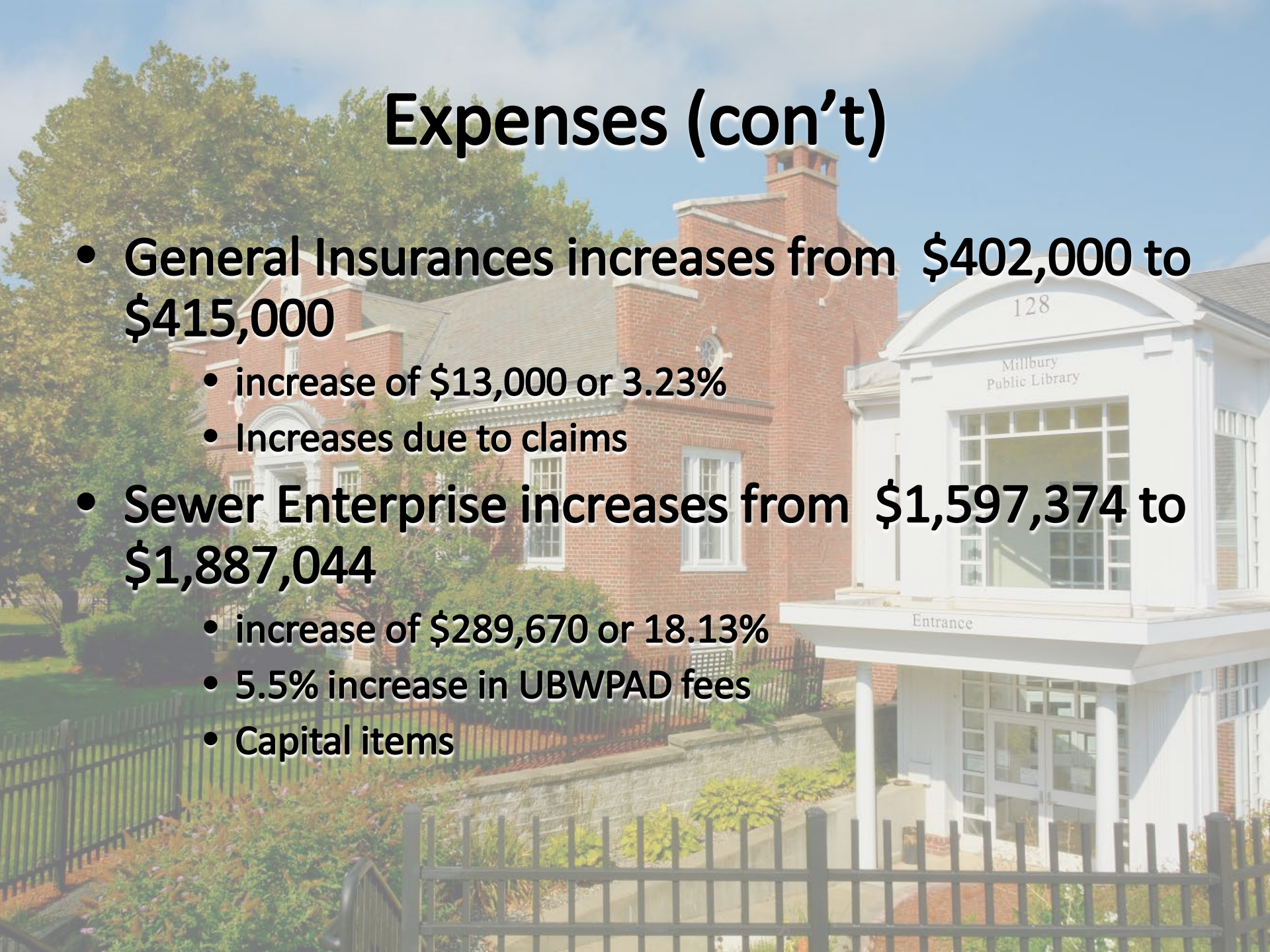


Expenses (con't)

- Debt Service decreased from \$2,746,090 to \$2,731,825 to \$2,508,731
 - decrease of \$223,094 or -8.17%
 - Savings from refinancing
 - Rescue truck paid off
- Employee Benefits increased from \$6,625,596 to \$7,026,068
 - decrease of \$400,472 or 6.04%
 - increase due health insurance and retirement

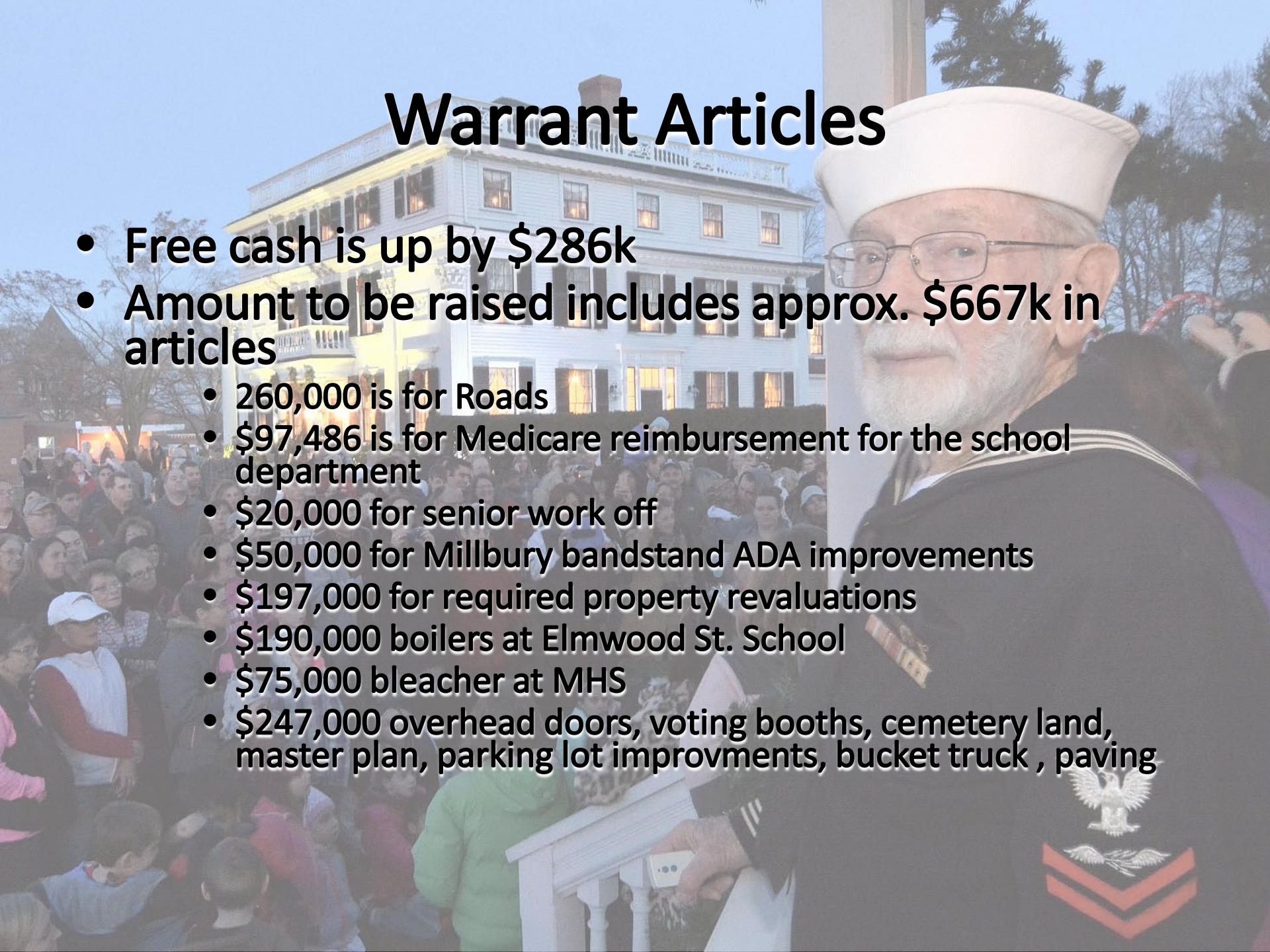
Expenses (con't)

- General Insurances increases from \$402,000 to \$415,000
 - increase of \$13,000 or 3.23%
 - Increases due to claims
- Sewer Enterprise increases from \$1,597,374 to \$1,887,044
 - increase of \$289,670 or 18.13%
 - 5.5% increase in UBWPAD fees
 - Capital items



Warrant Articles

- Free cash is up by \$286k
- Amount to be raised includes approx. \$667k in articles
 - 260,000 is for Roads
 - \$97,486 is for Medicare reimbursement for the school department
 - \$20,000 for senior work off
 - \$50,000 for Millbury bandstand ADA improvements
 - \$197,000 for required property revaluations
 - \$190,000 boilers at Elmwood St. School
 - \$75,000 bleacher at MHS
 - \$247,000 overhead doors, voting booths, cemetery land, master plan, parking lot improvements, bucket truck , paving





SUMMARY & QUESTIONS